

JETMASTER®

DIRECT PRINT PHOTO PANEL

Design - Print - Display

Create effortless impact for your images. A lightweight alternative to solid MDF display blocks, this photo display frame can be printed directly on a UV flatbed printer; just position, print and display. The printable surface is finished in a bright white colour, no need to print white first, available in a range of sizes with a smart black matte edge finish.

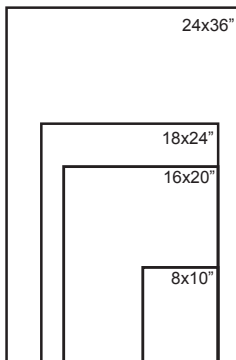
Applications:

- Permanent interior signage
- High impact advertising
- POS display and trade show graphics

General Specifications:

- Direct UV printable
- Thickness: 1 inch
- Lightweight
- Pre drilled holes on back for easy hanging

Size (Inches)	Printer Type	Depth		Quantity per box
		mm	inches	
8x10	UV Flat Bed / UV Hybrid	25	1	10
16x20	UV Flat Bed / UV Hybrid	25	1	8
18x24	UV Flat Bed / UV Hybrid	25	1	8
24x36	UV Flat Bed / UV Hybrid	25	1	5

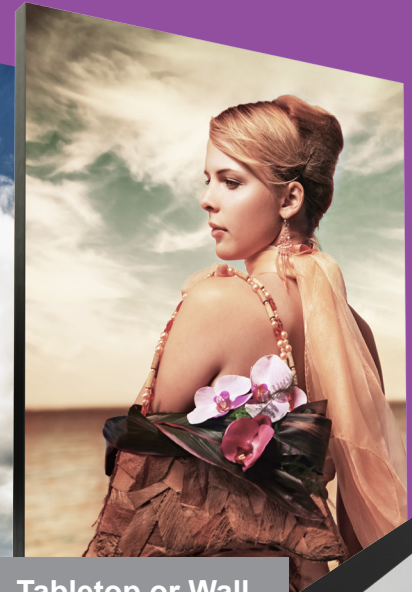


Printer Compatibility:

- ✓ Swiss Qprint Nayla
- ✓ Jetrix 2030
- ✓ Océ
- ✓ EFI/Vutek
- ✓ FujiFilm
- ✓ Scitex
- ✓ Mimaki
- ✓ Agfa
- ✓ Gandy



Print Direct From
A UV Flatbed
Printer



Tabletop or Wall
Mounted



Black Edging



JetMaster Direct Print Photo Panel Available From:

Canon

CANON SOLUTIONS AMERICA

Please call Océ Imaging Supplies: 1-800-323-4827 to speak with a sales representative or visit us on the web at csa.canon.usa

JETMASTER®
Image Display Systems



by Innova

The JetMaster Image Display Systems Range is manufactured and distributed by Innova Art. For more information about Innova and their range of digital media visit www.innovaart.com