



CONVEYANCE

Geared for smart, profitable print production.

SMART CHANGE STARTS HERE.

 CANON SEE IMPOSSIBLE

Conveyance helps to further Canon Solutions America's commitment to bring Industry 4.0 innovation to the automated smart print factory.



CONVEYANCE:

The process of transferring property from one owner to another. To convey is to exchange information.

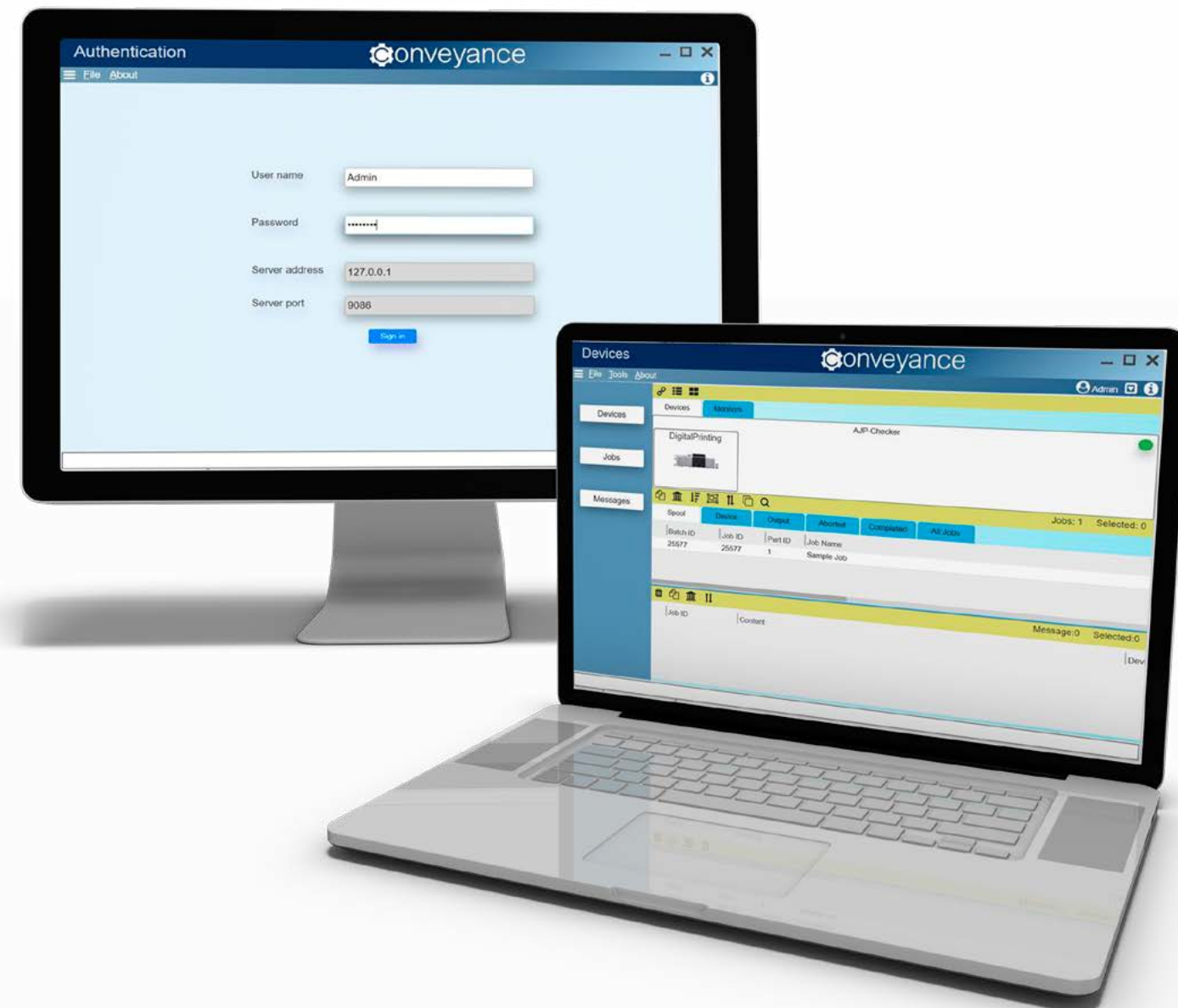
New technologies in the commercial and book printing industry are creating opportunities to streamline operations, distribute print products faster, and develop new revenue streams. Digital printing, which encompasses both inkjet and toner applications, allows print service providers to produce work as needed (on-demand) or to take the pulse of the market and adjust their strategy as demand wanes or surges helping to reduce the need for warehousing materials, and the associated risks and costs of print waste.

To reap the rewards of digital demand printing, requires a strong infrastructure on both the print requester's and the print provider's sides. Today's adoption of Job Description Format (JDF) and XML-based file format industry standards for end-to-end job ticket specifications, combined with a message format for sending feedback back from devices, are fundamental to foster file portability and accurate information exchange.

JDF can define the entire print production process as well as the print product lifecycle in a very detailed manner.

But it doesn't stop there. Successfully migrating from handling, managing, and fulfilling dozens to possibly thousands of orders per day requires innovation to produce high-volume, short-run jobs for faster turnaround, greater efficiency, and greater profitability.

As a part of the Canon Solutions America's automated workflow software portfolio, Conveyance enables file transfer and job information exchange from print requester or publisher to print provider via a standardized, comprehensive XML-based file format workflow. In addition, Conveyance's intuitive, rule-based workflow enables complete automation of order submission, impositions, job grouping, job splitting, and routing, while tracking the integrity of each order. Conveyance furthers Canon Solutions America's commitment to bring Industry 4.0 innovation to the automated smart print factory.



Quick Facts

- 60% Printers have prioritized investing in Workflow Automation
- 277% Average ROI for JDF-enabled automation
- 480% Average ROI for fully automated, end-to-end automation
- 6979 Average labor hours saved/year by printers who implement JDF

Source: InfoTrends' Production Software Investment Outlook and CIP4 CIPPI Case Studies, CIP4 Organization website <https://www.cip4.org/who-is-cip4.html>



THE CONVEYANCE WORKFLOW

But that's not all, for offset print providers expanding into digital print, Conveyance provides coherence, predictability and stability to automate short runs for both novices and those experienced in JDF workflows. Conveyance manages the entire print production process, as well as the print product lifecycle, in a very detailed manner to fully recognize the efficiencies of digital short run.

Based on a Microsoft® Windows® 10 Pro platform, Conveyance intuitively offers job grouping and job splitting, while keeping track of order integrity, and utilizes standard CIP4 signature folds to paginate single-sheet bindery automatically. Conveyance allows inline cover to text block authentication, flexibility for late bindery decisions or rush jobs, and manages reprints from the main production. Finally, Conveyance enables communication to finishing devices that are both JDF-enabled or barcode-driven, inline or nearline.

Through JDF/JMF protocol to MIS or ERP and operation dashboard displays, Conveyance communicates real-time order status throughout the production process, giving commercial printers and book manufacturers the ability to work more efficiently. It helps drive profitability by helping to reduce manual intervention, limit paper changes, streamline workflows, and steadily helping to reduce the cost of short-run digital production.

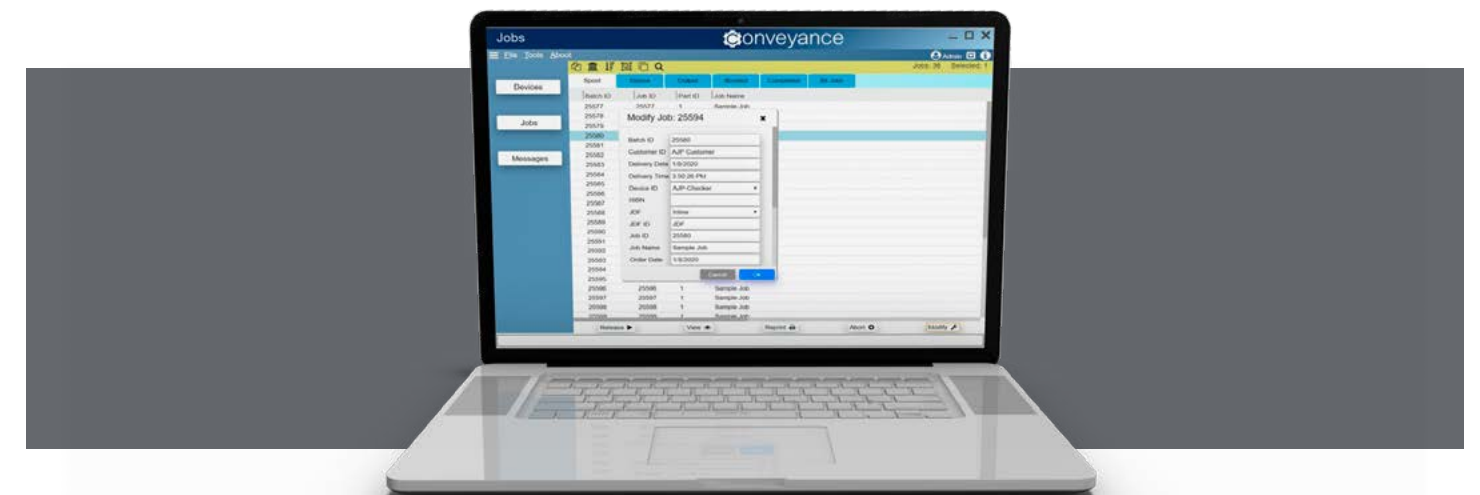
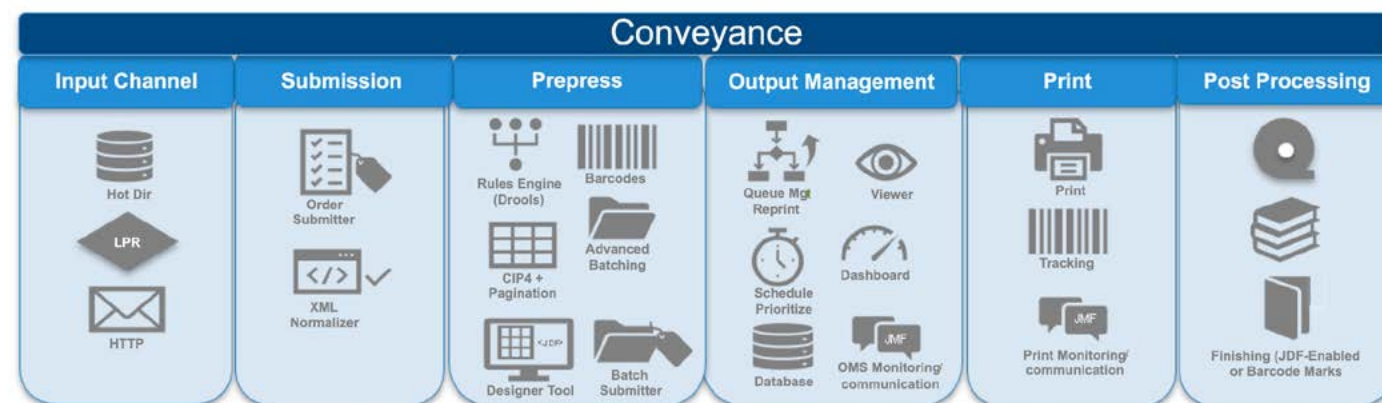
Canon Solutions America has been a pioneer in inkjet printing for years mainly due to our ability to solve complex processes that include workflow, finishing and integration. With our inkjet reputation, we are in prime position to promote cutting-edge software into a marketplace that has shown a true need for the short-run digital print workflow management and automation – namely the book manufacturing and commercial print digital market.

This streamlined communication between print requester and print provider enables them to work together to help:

- Utilize a common language to support comprehensive lifecycles of print jobs
- Quickly react to changes in the market, help produce digital short runs to accommodate unexpected demand
- Release batches to meet SLAs
- Authenticate binding covers with text blocks
- Fulfill orders with many line items
- Track and manage entire production process
- Handle reprints and rush jobs seamlessly

- Implement a decentralized printing model, where book files are sent to book manufacturers in the market where there is a demand
- Enable new market opportunities for out-of-print titles, four color trade books, or personalized books
- Reduce inventory costs and waste

As a pioneer in inkjet printing, Canon Solutions America is proud to offer its cutting-edge Conveyance software to customers who need a short-run digital print workflow management and automation solution, and our Professional Services teams and software solution experts are ready to play a key role in helping to ensure smart, automated print production.



Recognizing the Economics of Short-Run Printing with Comprehensive Workflow:

- Helps achieve end-to-end job production accuracy through CIP4 Compliance, Job Description Format (JDF) and XML-based file format standards
- Intuitive business-rules for batching incoming work orders by similar job groupings
- Assists in obtaining increased productivity through proper information exchange and less operator intervention for paper changes and error recovery time
- Broadens flexibility through dynamic bindery to impose signature layouts during runtime without returning to prepress to meet rush jobs or tight production schedules
- Intuitive job splitting separating covers from text blocks, and reprints from the main production
- Barcode creation for tracking order integrity and authentication of inline cover to text block merge
- Integrated finishing processes through JDF-enabled communications or barcode finishing marks for inline production of finished book and book-like products

128 barcode for non-JDF enabled Perfect Bound Cutter Face-up or Face-down

2D barcode for reprint



128 barcode for cover to text block matching inline at Perfect Binder

This text identifies Job ID batch number and page number of the batch.

2D barcode for reprint



128 barcode for cover to text block matching inline at Perfect Binder

This human readable text identifies Job ID, batch number and page number of the batch.

CONVEYANCE PRINT APPLICATIONS



Magazine, catalogs, magalogs



Paperback books



Education and SMT text books



Financial Annuity Reports

Canon

CANON SOLUTIONS AMERICA

1-844-443-INFO (4636) [CSA.CANON.COM](https://www.csa.canon.com)

©2020 Canon Solutions America, Inc. All rights reserved.

Canon is a trademark or registered trademark of Canon Inc. in the United States and elsewhere. Conveyance is a trademark or registered trademark of Canon Solutions America, Inc. in the United States and elsewhere. Microsoft® and Windows® are either registered trademarks or trademarks of Microsoft Corporation in the United States and/or other countries. All other referenced product names and marks are trademarks of their respective owners and are hereby acknowledged.