



## DC-618

Slitter/Cutter/Creaser

All-In-One Finishing for Full-Bleed Applications

SMART CHANGE STARTS HERE.

 CANON SEE IMPOSSIBLE

# DC-618 SLITTER/ CUTTER/CREASER

The fully automated DC-618 Slitter/Cutter/Creaser is Duplo's compact yet powerful all-in-one finishing solution designed for today's digital printer. With the ability to process up to six slits, 30 cuts, and 20 creases in one pass, the DC-618 is designed to deliver full-bleed applications up to 23 sheets per minute without the white borders and toner cracking for a clean finish. Produce an array of on-demand applications with ease including 24-up business cards, gate-fold invitations, direct mailers, brochures, book covers, and so much more. Bring your finishing in-house!



## Newly Enhanced PC Controller Software

Duplo has revamped the look and feel of the PC Controller interface and it's one of the newest features included with the DC-618. With the software loaded on a PC station (sold separately), both new and experienced operators can program jobs with ease, make quick adjustments, and save an unlimited number of jobs onto the hard drive for instant changeovers. Operators can alternatively use the control panel for set up and use it to save up to 250 jobs onto the built-in memory.



## Automatic Barcode and Registration Mark Scanner

The built-in Charged Coupled Device (CCD) scanner, a staple in Duplo's line of Slitter/Cutter/Creasers, can be used to recall any job stored in memory simply by reading the printed barcode and perform changeovers automatically. The scanner can also read registration marks and compensate for the sheet-by-sheet image shift in both horizontal and vertical directions at up to 19 sheets per minute, helping to ensure precision finishing every time.

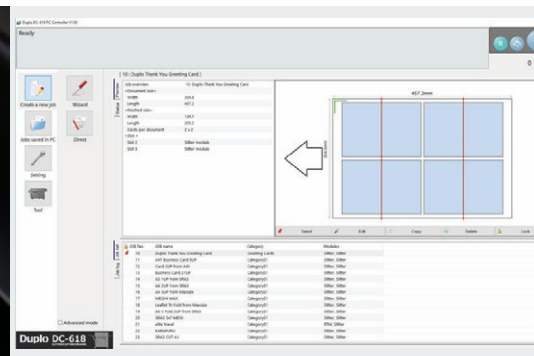


## Automated Prepress & Finishing with EFI Fiery Print Servers

Helps save up to 70 percent in setup time by automating job preparation and eliminating manual data entry with Fiery Impose® in Fiery Driven™ print environments. For common jobs, such as business cards and greeting cards, Duplo provides imposition templates to use in Fiery Impose, that match the finishing templates on the DC-618. For custom layout jobs, create a new layout file on the PC Controller, import it into Fiery Impose and instantly see a preview of the finishing lines to verify job designs before printing. This integration offers time-saving workflows, and helps reduce errors and accelerate turnaround times. For more information, download the how-to guides and templates at [fiery.efi.com/htg-impose-duplo](http://fiery.efi.com/htg-impose-duplo).



DC-618 shown with optional PC and PC arm.





## Duplo's Signature Feed System

With a 3.9" (100 mm) capacity stacker and air suction belt feed system, the DC-618 helps to ensure a consistent and productive operation. Two fans provide the air suction and sheet separation while the air knife delivers air flow to the stack to help reduce static between the printed applications. The system feeds from the top of the stack to help minimize scuffing and marking on the sheets. The ultrasonic double-feed sensor can detect when two or more sheets have been fed. The DC-618 includes a 29.5" long paper tray and a side air option is available to provide additional air for longer sheet sizes.



## Increased Versatility with Perforation Modules

Increase the finishing capabilities of the DC-618 by adding optional modules. Mix and match up to two modules, such as the Rotary Tool and Cross Perforation, to perform "T" or "L" shape perforations for a range of unique applications.

- Manual Perforation Module performs continuous perforations along the length of the sheet. Ideal for coupon and ticket applications.
- Rotary Tool Module performs perforations, micro-perforations, and scoring along the length of the sheet. The tools are positioned automatically and can also perform strike perforations.
- Cross Perforation Module performs perforations and micro-perforations along the width of the sheet. The tools are positioned automatically and can also perform strike perforations.



## Precision Finishing Second to None

The DC-618 comes equipped with rotary slitters, a guillotine cutter, and a depth-adjustable creaser, offering the versatility of multiple devices without the manual and time-consuming setups. Margins are trimmed horizontally by the slitter and vertically by the cutter and are automatically deposited into the waste bin. Only the finished pieces are delivered on the exit tray. The card stacker keeps smaller pieces, such as business cards and postcards, neatly stacked and can be removed when running larger applications.

Creasing digitally printed output prior to folding helps prevent toner cracking and unattractive fold lines. The creaser utilizes male and female matrix channels to create a hinge along the sheet to be folded with ease. Creasing performance can be optimized by using the adjustable three-step depth crease and the new creasing width tool for thicker stock. The DC-618 can handle substrates from 110 to 400 gsm.

- *Up to 23 sheets per minute*
- *Paper weight up to 400 gsm*
- *Up to six slits, 30 cuts & 20 creases*
- *3.9" feed capacity stacker*
- *Enhanced PC Controller software*
- *Barcode and Registration Mark Scanner*
- *Optional Manual Perforation, Rotary Tool, and Cross Perforation modules*





## SPECIFICATIONS

<b>SPEED</b>	Up to 23 pages per minute (8.5" x 11" two cuts, one crease, and REG off)
<b>INPUT PAPER SIZE</b>	8.26" x 8.26" to 13" x 39.3" (210 mm x 210 mm to 330.5 mm x 1,000 mm <sup>1</sup> )
<b>MIN. FINISHED SIZE</b>	1.89" x 1.97" (48 mm x 50 mm)
<b>TOLERANCE</b>	± 0.3 mm business cards; ± 0.2 mm on programmed position
<b>FEEDER CAPACITY</b>	3.9" (100 mm)
<b>PAPER WEIGHT</b>	110 - 400 gsm
<b>SLITS</b>	6 per sheet
<b>CUTS</b>	30 per sheet
<b>CREASES</b>	20 per sheet
<b>MEMORY</b>	250 jobs using the control panel
<b>STANDARD FEATURES</b>	Air knife, card stacker, fan registration, automatic gutter slit deflectors, crease depth and width adjustment, ultrasonic double-feed detection sensor, CCD scanner, PC Controller software, PC pole mount, long paper tray, and LCD control panel
<b>OPTIONS</b>	<p>PC and PC Arm, side air and 48" long conveyor stacker.</p> <p>PFM-04 Manual Perforation Module includes two perforation manually adjustable tools.</p> <p>RTM-08 Rotary Tool Module includes two each of perforation, micro-perforation, and scoring tools. Up to two RTM-08s can be installed in the unit at one time, replacing slitter modules. Both OMK-13/14 Motor Kits must be installed.</p> <p>CPM-08 Cross Perforation Module includes one each of perforation and micro-perforation tools. The OMK-13 Motor Kit must be installed. (Available Q3 2020)</p> <p>The OMK-13/14 Motor Kits must also be installed when the RTM-08 and CPM-08 are being used together.</p>
<b>POWER REQUIREMENTS</b>	120v 50/60 Hz
<b>DIMENSIONS (WXDXH)</b>	67" x 32" x 44" (1,690mm x 810 mm x 1,125 mm)
<b>WEIGHT</b>	375 lbs. (170 kg)

\* Must purchase PC Arm

<sup>1</sup> Length is 29.5" (750 mm) when using standard long paper feed tray.

Production rates are based on optimal conditions and may vary depending on stock and environmental conditions.

As part of our continuous product improvement program, specifications are subject to change without notice.

**Canon**  
CANON SOLUTIONS AMERICA

**Duplo**

**1-800-815-4000 CSA.CANON.COM**