



Shown with optional PC and PC arm.

DC-646

Slitter/Cutter/Creaser

Versatile, High-Performance All-In-One Finishing for Digital Color Documents

SMART CHANGE STARTS HERE.

 **CANON SEE IMPOSSIBLE**

VERSATILE, HIGH-PERFORMANCE ALL-IN-ONE FINISHING FOR DIGITAL COLOR DOCUMENTS

The DC-646 Slitter/Cutter/Creaser is Duplo's versatile digital color finisher providing printers the ability to create a multitude of unique full-bleed applications with efficiency and flexibility. Performing up to eight slits, 30 cuts, and 20 creases in a single pass, the DC-646 helps eliminate white borders and prevent toner cracking on fold lines up to 30 sheets per minute and also offers optional rotary tool and cross perforating modules, both with strike perforating capabilities, for increased versatility. With the DC-646, users can produce 24-up business cards on 12" x 18" or 36-up on 14" x 26" paper sizes, slit-score greeting cards, micro-perforated coupons, direct mailers with tear-away cards, and much more!

Easy Job Setup From a PC

The DC-646 Slitter/Cutter/Creaser is easy for anyone to use and even the most inexperienced operator can finish a job within minutes. The DC-646 comes equipped with the PC Controller software, enabling users to operate the system from a PC. The wizard makes it simple for operators to create new jobs, make adjustments, and save virtually an unlimited number of jobs on the hard drive for faster changeovers.

A job template library is included with the PC Controller which can be used to produce common applications. To help ensure print jobs are optimized for finishing on the DC-646, a sample PDF is also included in the template library so margins and gutters are set correctly. Operators can now also generate PDF template files for jobs created on the PC Controller.

In addition, the DC-646 comes built-in with a CCD scanner, enabling it to recall any job stored in memory simply by reading the printed barcode and automatically setting up the job. The scanner also reads registration marks and compensates for the sheet-by-sheet image shift in both directions, delivering accurately finished pieces.

- Helps eliminate white borders and prevents toner cracking with up to eight slits, 30 cuts, and 20 creases in a single pass.
- Built-in Charge Coupled Device (CCD) scanner reads barcodes to automatically recall any job stored in memory as well as registration marks to correct image shifting.
- Compatible with the Integrated Folding System, the DC-646 IFS can slit, cut, crease, and fold all in one pass.
- Optional Rotary Tool and Cross Perforation modules perform perforations, micro-perforations, scores, slit-scores, and strike perforations.
- A job template library is included with the PC Controller software for common applications.
- Helps achieve up to 70 percent setup time saving via integration and automation with Fiery Impose in Fiery Driven print environments.

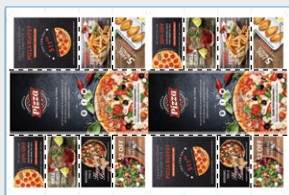
Superior, High Capacity Feeding

The DC-646 Slitter/Cutter/Creaser features a 3.9" (100 mm) feed capacity stacker and a unique top air-suction feeding system to help maintain the consistency and productivity throughout the operation. The high capacity stacker means the system will run for a longer period of time without having to reload while the air-suction system feeds from the top of the stack to help reduce scuffing and marking on the sheets.

Additionally, the DC-646 comes equipped with side air, an air knife and ultrasonic sensor for improved feed consistency. The air knife, provides additional air flow to the stack and helps to reduce static on the sheets. The ultrasonic sensor can detect when two or more sheets have been fed and automatically sends rejected sheets into the reject tray.

DC-646 SAMPLE APPLICATIONS

2-up Coupons on 13" x 19" with T-shape Offset Perforated Cards



finished pieces

2-up Flyers on 12" x 18" with T-shape Perforated Cards



finished pieces

1-up Flyer on 12" x 18" with One Fold and T-shape Perforated Cards



fold with IFS in one pass finished pieces

Create a range of offset and digital color printing applications such as:

- Business cards
- Greeting cards
- Invitations
- Brochures
- Menus
- Direct mail pieces
- CD/DVD case inserts
- Tent cards
- Book covers



Increased Versatility

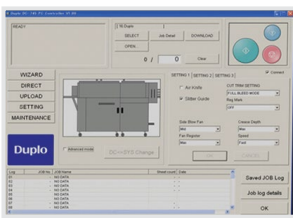
Processing up to eight slits, 30 cuts, and 20 creases in a single pass, the DC-646 finishes full-bleed documents up to 26.4" (670 mm) in length. To further extend its versatility, optional modules can be added to meet a wider array of customer demands. The DC-646 offers three areas where operators can mix and match any optional modules to produce a variety of unique applications.

- The DC-646 is also compatible with the Integrated Folding System (IFS), creating an even more versatile finishing solution that slits, cuts, creases, scores, perforates, slit-scores, micro-perfs, and folds—all in one pass.
- Optional 48" Long Conveyor Stacker allows for higher stacking capacity and unloading while machine is running.

With the DC-646, users can produce unique applications such as:

- Rotary Tool Module performs perforations, micro-perforations, scores, slit-scores, and strike perforations (across the length of the sheet.)
- Cross Perforating Module performs perforations, micro-perforations, slit-scores, and strike perforations (across the width of the sheet.)
- Add an extra Slitting Module with two more slitters for a maximum of eight slits per sheet (six slits standard + two slits optional.)

- 24-up business cards (without an additional module required.)
- "L" perforated business card within a postcard.
- Slit-score, lay-flat greeting cards.
- Direct mailers with "T" or "L" shape perforated coupons.
- Event tickets with multiple perforations.



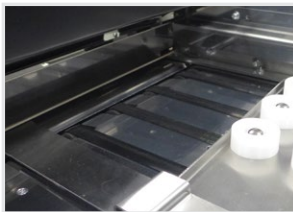
PC Controller enables users to easily and quickly operate, create, and adjust jobs.



Customer-replaceable modules help create versatile applications with a wide range of substrates. The color codes indicate module locations, making it easy for the user to install correctly.



The **CCD scanner** can read barcodes to recall any job stored in memory as well as the registration mark to help correct any image shifting.



Adjustable in four steps, the **vacuum registration table** precisely aligns each sheet, maintaining a high degree of precision finishing.



Automatic feed tray features a **vacuum feeding system** that help prevent marking, miss, or double feeding. The air knife aids in sheet separation.



Capable of running business cards without an additional module, the attachable **business card stacker** with individual guides helps to generate neatly stacked outputs.

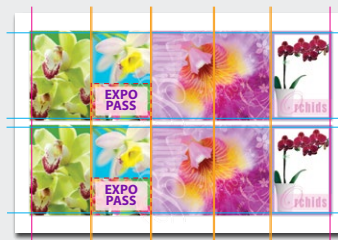
2-UP FIVE-PANEL ACCORDION CARD ON 12" X 18" APPLICATION WORKFLOW



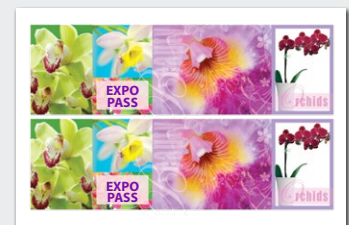
finished pieces



tear-away coupon or reply card



slit, cut, crease, strike perf, and cross perf in one pass



sample application

| SPECIFICATIONS | | |
|---------------------------------------|--|--|
| FEEDER CAPACITY | 3.9" (100 mm) | |
| IN-FEED PAPER SIZE | Width | 8.26" x 14.56" (210 - 370 mm) |
| | Length | 8.26" x 26.37" (210 - 670 mm) |
| FINISHED SIZE | Minimum (W x L) | 1.89" x 1.97" / 48 mm x 50 mm |
| PAPER WEIGHT | 110 - 350 gsm / 80 lb. text - 130 lb. cover | |
| SPEED (3-STEP SETTING) | 30 ppm (A4 SEF, lead/trim 10 mm, center crease) 22 ppm when using CCD | |
| IMAGE SHIFT COMPENSATION | Reading modes: every sheet, every "x" sheet, adjust over "x" mm shift only, first sheet only | |
| TOLERANCE | ±0.2 mm | |
| SLITS | 6 standard slitter tools (2 margin slitters, 4 center slitters) Optional slitter module (the module carries 2 slitter tools) can be installed for a maximum of 8 slits | |
| CUTS | Maximum 30 cuts per sheet | |
| CREASES | Maximum 20 creases per sheet | |
| CREASE DEPTH ADJUSTMENT | 3 steps (from control panel) | |
| EXIT TRAY CAPACITY | 5.9" (150 mm) | |
| CARD STACKER (STANDARD) | Type | Stacker |
| | Capacity | 3.54" (90 mm) |
| | Stackable card size | Width: 1.89" x 14.56" (48 - 370 mm) Length: 1.97" x 7.87" (50 - 200 mm) |
| STANDARD FEATURES | 250-job memory in main unit; test feed (1 sheet); air knife; side air; feed skew adjustment; pause feeding; ultrasonic double-feed detection; CCD scanner for automatic job recall via barcode reading and image drift compensation via registration mark reading; on-the-fly rejection; card stacker; job lock feature; batch separation; waste box; emergency stop switch; cleaning mode; PC controller software; PDF template generator, PC arm mount | |
| OPTIONS | Rotary tool module (includes 2 each of perf, micro perf, score, slit-score), can also do strike perforation; Slitter module (2 independent sets of slitters); Cross perforating module (includes 1 each of perf, micro perf, slit-score), can also do strike perforation. (All modules require a PCB kit, however only one kit is needed for the use of multiple modules); 48" Long Conveyor Stacker; Integrated Folding System (IFS); PC arm and PC | |
| POWER CONSUMPTION | 115 V: 5.5. A, 670 W, 60 Hz | |
| DIMENSIONS (W X D X H) | In use: 90" x 34" x 44" / 2300 mm x 875 mm x 1120 mm | |
| REQUIRED FOOTPRINT (W X D X H) | 69" x 35" x 53" / 1760 mm x 880 mm x 1335 mm | |
| WEIGHT | Gross | 760 lbs./ 345 kg |
| | Net | 617 lbs./ 280 kg |

As part of our continuous product improvement program, specifications and descriptions are subject to change without notice.



DC-646 Integrated Folding System

Canon
CANON SOLUTIONS AMERICA

Duplo

1-800-815-4000 CSA.CANON.COM

Companies portrayed and names used herein are fictitious. Any resemblance to any other company or person is coincidental and unintentional. Canon is a registered trademark of Canon Inc. in the United States and elsewhere. All other referenced product names and marks are trademarks of their respective owners and are hereby acknowledged. © 2020 Canon Solutions America, Inc. All rights reserved.

06/20-0540-4782