



Shown with optional PC and PC arm.

DC-746

Slitter/Cutter/Creaser

The Ultimate All-In-One Digital Color Finisher

SMART CHANGE STARTS HERE.

THE ULTIMATE ALL-IN-ONE DIGITAL COLOR FINISHER

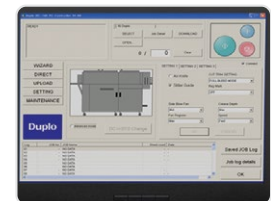
The DC-746 Slitter/Cutter/Creaser is Duplo's most powerful all-in-one digital color finishing solution, and is the ideal companion for digital printers with medium to high production jobs. Performing up to 10 slits, 25 cuts, and 20 creases in one pass, this digital color finisher eliminates white borders and toner cracking on fold lines, producing professionally finished documents in a matter of minutes. The DC-746 comes equipped with a high capacity feeder, PC Controller software for easy job setup, and Charge Coupled Device (CCD) scanner, as well as offers optional rotary tool and cross perforation modules, both with strike perforating capabilities, for increased versatility. Produce 24-up and 36-up business cards, slit-score greeting cards, micro-perforated coupons, direct mailers with perforated cards, and much more!

Ease of Use

The DC-746 Slitter/Cutter/Creaser is easy for anyone to use that even the most inexperienced operator can finish a job within minutes. Using the PC Controller software, users can operate the system from a PC. The wizard makes it simple for operators to create new jobs, make adjustments, and save virtually an unlimited number of jobs on the hard drive for faster changeovers. The built-in CCD scanner enables it to recall any job stored in memory simply by reading the printed barcode and automatically set up the job. The scanner also reads registration marks and compensates for the sheet-by-sheet image shift and shrinkage, delivering accurately finished pieces every time.

Barcode and registration marks can be easily applied with the EFI Fiery Command Workstation imposition tool (Fiery System 10 or newer). A job template library is included with the PC Controller software which can be used to immediately begin producing common applications such as business cards, tickets, postcards, and greeting cards. To ensure print jobs are optimized for finishing on the DC-746, a sample PDF is also included in the template library to help make sure margins and gutters are set correctly.

- Helps eliminate white borders and prevents toner cracking with up to 10 slits, 25 cuts, and 20 creases in a single pass.
- Built-in CCD scanner reads barcodes to automatically recall any job stored in memory as well as registration marks to correct any image shifting.
- Compatible with the Integrated Folding System, the DC-746 IFS can slit, cut, crease, and fold all in one pass.
- Waste Conveyor help prevent bin from filling up inside the machine, allowing waste margins and gutters to be transported outside the machine for easy removal.
- Ideal for business cards and postcards, the Elevator Stacker automatically lowers as the finished pieces are delivered and keeps them neatly stacked.
- Optional Rotary Tool and Cross Perforation modules perform perforations, micro-perforations, scores, slit-scores, and strike perforations.
- A job template library is included with the PC Controller software for common applications.
- Helps achieve up to 70 percent setup time saving via integration and automation with Fiery Impose in Fiery Driven print environments.



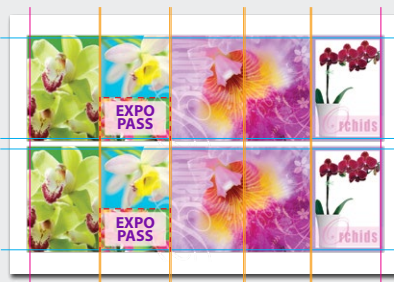
2-UP FIVE-PANEL ACCORDION CARD ON 12" X 18" APPLICATION WORKFLOW



finished pieces



tear-away coupon or reply card



slit, cut, crease, strike perf, and cross perf in one pass



sample application

The **DC-746 Slitter/Cutter/Creaser** is the ultimate all-in-one finishing machine for the on-demand market. Its standard capabilities allow print service providers to finish an array of applications and by combining the optional modules available, the possibilities of finished products are truly endless.



High Productivity

The DC-746 Slitter/Cutter/Creaser features a 5.9" (150 mm) feed capacity stacker and a unique top air-suction feeding system to maintain consistency and productivity throughout the operation. The high capacity feeder means the system will run for a longer period of time without having to reload, while the air-suction system feeds from the top of the stack to help reduce scuffing and marking on the sheets.

The DC-746 also features an air knife and ultrasonic sensor for improved feed consistency. The air knife provides additional air flow to the stack and to help reduce static on the sheets. The ultrasonic sensor can detect when two or more sheets have been fed and automatically sends rejected sheets into the reject tray.

To help maintain productivity, the DC-746 comes with a waste conveyor that is fitted inside the machine. The waste conveyor transports all the waste out of the machine into an external waste box, making it easy for operators to empty it without stopping the machine.



Increased Versatility

To further extend its versatility, optional modules can be added to meet a wider array of customer demands. The DC-746 offers two areas where operators can mix and match the optional modules to produce a variety of unique applications.

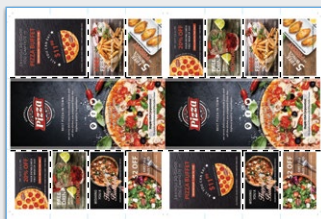
- Rotary Tool Module performs perforations, micro-perforations, scores, slit-scores, and strike perforations (across the length of the sheet.)
- Cross Perforating Module performs perforations, micro-perforations, slit-scores, and strike perforations (across the width of the sheet.)
- Add up to two extra Slitting Modules with two sets of slitters each for a maximum of 10 slits (six standard slitters + two option slitters + two option slitters.)
- The DC-746 is also compatible with the Integrated Folding System (IFS), creating an even more versatile finishing solution that slits, cuts, creases, scores, perforates, slit-scores, micro-perfs, and folds—all in one pass.

With the DC-746, users can produce unique applications such as:

- 24-up or 36-up business cards
- "L" perforated business card within postcard
- Slit-score, lay-flat greeting cards
- Direct mailers with "T" or "L" shape perforated coupons
- Event tickets with multiple perforations

DC-746 SAMPLE APPLICATIONS

2-up Coupons on 13" x 19" with T-shape Offset Perforated Cards



finished pieces

2-up Flyers on 12" x 18" with T-shape Perforated Cards



finished pieces

1-up Flyer on 12" x 18" with One Fold and T-shape Perforated Cards



fold with IFS in one pass

finished pieces

SPECIFICATIONS		
FEEDER CAPACITY	150 mm (5.9")	
IN-FEED PAPER SIZE	Width	8.26" x 14.56" (210 - 370 mm)
	Length	8.26" x 26.4" (210 - 670 mm)
FINISHED SIZE	Minimum (W X L)	1.89" x 1.97" (48 mm x 50 mm)
	Maximum (W X L)	14.56" x 25.6" (370 mm x 650 mm) (up to 39.3" (999 mm) length can be programmed and processed using the control panel)
PAPER WEIGHT	110 - 350 gsm / 80 lb. text - 130 lb. cover (when any optional module other than the standard transport module is fitted in Option 2 area: 127 gsm - 350 gsm)	
SPEED (3-STEP SETTING)	50 ppm (A4 SEF, lead/trim 10 mm, center crease) 40 ppm when using CCD	
IMAGE SHIFT COMPENSATION	Reading modes: every sheet, every "x" sheet, adjust over "x" mm shift only, first sheet only	
TOLERANCE	±0.2 mm	
SLITS	6 standard slitter tools (2 margin slitters, 4 center slitters) 2 optional slitter modules (each module carries 2 slitter tools) can be installed for a maximum of 10 slits	
CUTS	Maximum 25 cuts per sheet	
CREASES	Maximum 20 creases per sheet	
CREASE DEPTH ADJUSTMENT	3 steps (from control panel)	
EXIT TRAY CAPACITY	5.9" (150 mm)	
CARD STACKER (STANDARD)	Type	Elevator-automatically lowers as finished pieces are delivered
	Capacity	90 mm (3.54")
	Stackable card size	Width: 1.89" x 14.56" (48 - 370 mm) Length: 1.97" x 5.9" (50 - 150 mm)
STANDARD FEATURES	80-job memory in main unit; test feed (1 sheet); air knife; side blow; feed skew adjustment; ultrasonic double-feed detection; CCD scanner for automatic job recall via barcode reading and image drift compensation via registration mark reading; on-the-fly rejection; card stacker; waste conveyor; emergency stop switch; cleaning mode; PC Controller software, PC arm mount	
OPTIONS	Rotary tool module (includes 2 each of perf, micro perf, score, slit-score), can also do strike perforation; Slitter module (2 independent sets of slitters); Cross perforating module (includes 1 each of perf, micro perf, slit-score), can also do strike perforation. (All modules require a PCB kit, however only one kit is needed for the use of multiple modules); 48" Long Conveyor Stacker; Integrated Folding System (IFS); PC arm and PC	
POWER CONSUMPTION	115 V: 5.5 A, 670 W, 60 Hz 230V: 3.2 A, 660 W, 50/60 Hz	
DIMENSIONS (W X D X H)	In use: 90" x 34" x 44" / 2300 mm x 875 mm x 1120 mm	
REQUIRED FOOTPRINT (W X D X H)	111" x 66" x 63" / 2820 mm x 1700 mm x 1620 mm	
WEIGHT	1008 lbs. / 457 kg	

As part of our continuous product improvement program, specifications and descriptions are subject to change without notice.



DC-746 Integrated Folding System

Canon
CANON SOLUTIONS AMERICA

Duplo

1-800-815-4000 CSA.CANON.COM

Companies portrayed and names used herein are fictitious. Any resemblance to any other company or person is coincidental and unintentional. Canon is a registered trademark of Canon Inc. in the United States and elsewhere. All other referenced product names and marks are trademarks of their respective owners and are hereby acknowledged. © 2020 Canon Solutions America, Inc. All rights reserved.

06/20-0538-4783