

Easy Large Format Viewing, Printing, and Accounting

Océ Repro Desk Studio software



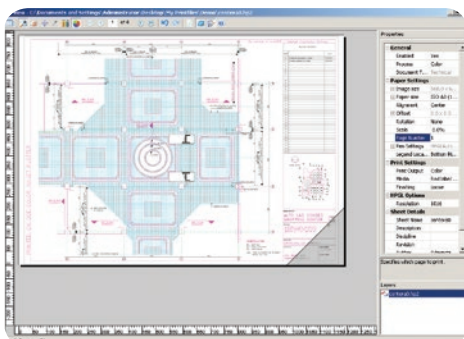
Easy large format viewing, printing, and job accounting

Make large format printing as easy as 1-2-3 with the new Océ Repro Desk® Studio software! It's an easy-to-use application for printing to multiple destinations — local printers or external print providers. It provides true WYSIWYP — What You See is What You Print — previewing of print-ready files. And it includes integrated accounting for effortless tracking and allocation of print volumes and costs.

VIEWING

EXACT VIEWING OF HOW YOUR PRINTED FILES WILL LOOK

- Print-ready technical documents can be previewed and adjusted prior to printing
- High-resolution viewer clearly shows even the smallest details
- Application-independent viewing of color and black & white images: PDF, DWG®, DWF®, HPGL, and many more



PRINTING

DIRECT PRINTING TO MULTIPLE LARGE FORMAT DEVICES

- Easily set common printing properties for documents individually or globally when submitting sets of files
- One application to print to your local printers or to an external print provider
- Users can print sets using the Océ Publisher job submission tool or directly from within an application using a universal print driver
- Users receive automatic job status notification on their desktop
- Setup automated workflows using the integrated rules engine, e.g. job-splitting between color and black & white or small and large format jobs
- Easy load-balancing across multiple printers for larger jobs

ACCOUNTING

AUTOMATIC, INTEGRATED ACCOUNTING OF EVERY JOB

- Integrated accounting for all of your large and narrow format printing
- Tracking of all scan and copy jobs on Océ large format devices
- Automatic cost allocation to specific users or projects
- Includes several easy-to-understand reports
- Reports can be generated in .DOC, .XLS, .RTF, and .PDF formats
- Data can be exported automatically on a scheduled basis



FEATURE OVERVIEW

EASY JOB CREATION

- Files can be added by any typical Windows® selection method
- Each page of a multipage file is added to the list
- Printing properties for the sheets can easily be set individually or globally
- The most common file formats are supported in color and black & white
- Office documents in Adobe® PDF are also supported (requires an optional converter)
- After making the print settings and processing them files are print ready
- Batch print DWG files with adjustable print time settings (requires AutoCAD®)

TRUE WYSIWYP VIEWER

- Technical documents can be viewed and adjusted as needed
- View exactly how the files will appear on the paper
- The high fidelity viewer can clearly display even the smallest detail
- View color and black & white images

BASIC PRINTING FEATURES

- Print directly to a single large format device or a group of devices
- Make last minute changes at print time (media source, print scale, billable yes/no, set count, collate, reverse, finishing options, output quality)
- Receive notifications at your desktop from Océ Monitor (service locally installed on the client PC) about the status of your job:
 - To which printer(s) a job is sent
 - If the job is printed (on Océ large format devices only)
 - If an error in the job is detected (e.g. the specified media is not available on the printer)
 - If it could not be printed

- Print the complete package to a local office printer
- Use the same application to print onto your stand alone large format printer, or to send a job to your in-house central print department or external reprographer

ADVANCED PRINTING FEATURES

- Automatic job-splitting based on device capabilities and document properties (e.g. color, black & white, small format, large format)
- Easy load-balancing of large jobs over multiple printers
- Optimized for Print Speed: divide the work among printers to complete the task as quickly as possible
- Optimized for Printer Usage: divide the work to make the total number of pages printed by each printer balanced
- Integrated rules engine allows for the automation of specific workflows
- Automatically send large jobs to a reprographer for more economical printing

TRACKING AND REPORTING OF OCÉ- AND NON-OCÉ DEVICES

PRINT ACCOUNTING

- All print jobs submitted to any printer through the Océ Repro Desk Studio software server
- All print jobs submitted to an Océ large format printer, through Océ submitters (Océ Print Exec® Workgroup, Océ Publisher Select, Océ Publisher Express), the Océ Windows Printer Driver or via direct submission (e.g. LPR)
- All reprints performed on the controller of an Océ large format device
- For Océ large format printers print jobs are accounted as printed (requires Océ Account Logic to be licensed on the device), for all other devices print jobs are accounted as sent to the device
- All orders submitted through Océ Repro Desk Studio software to remote locations using Location Center

PRINT JOB ALLOCATION

- When using Océ Publisher/LDF driver it will open a separate pop-up window (Digital Work Order)
- When using Océ job submission tools or the Océ Windows Printer Driver it uses build in fields supplied by the Océ Account Logic application

SCAN AND COPY ACCOUNTING

- Requires Océ Account Logic to be licensed on the device
- All scan/copy operations performed on an Océ large format device
- All scan jobs created using Scan Center within Océ Repro Desk Studio software

REPORTS AND DATA GENERATION

- Report generation in .DOC, .XLS .RTF, and .PDF format
- Export data according to a configurable time schedule in .PDF format
- Export of .CSV data per e-mail
- Several easy to understand reports included

JOB MANAGEMENT ON THE SERVER

- Make last minute changes to print jobs on hold
- Make reprints of already printed jobs
- Delete or abort print jobs that are stuck into the system

OCÉ CLIENT TOOLS™ SOFTWARE

- Océ Publisher — Main application used for the printing sets of drawings and specifications
- Océ LDF Write — Windows printer driver to print from within any Windows application
- Océ LDF HDI Driver for AutoCAD Special component added to AutoCAD to print directly from AutoCAD. The driver supports AutoCAD 2000–2009
- Océ PDF Writer — Windows printer driver to print from within any Windows compatible application into the PDF format

- Océ Document Viewer — integrates print ready file viewing functionality into Microsoft® Windows Explorer by adding “Thumbnail View” of the files in Windows Explorer

SUPPORTED FILE FORMATS

POSTSCRIPT AND PDF FILE SUPPORT

PDF, Postscript®, EPS

RASTER FILE TYPES SUPPORTED

TIFF, HP-RTL, BMP, PNG, JPG/JPEG, CCITT G4, CALS

VECTOR FILE TYPES SUPPORTED

HPGL, HPGL/2, Calcomp 906/907

AUTODESK® FILE TYPE SUPPORTED

DWG and DWF

OCÉ FILE TYPES SUPPORTED

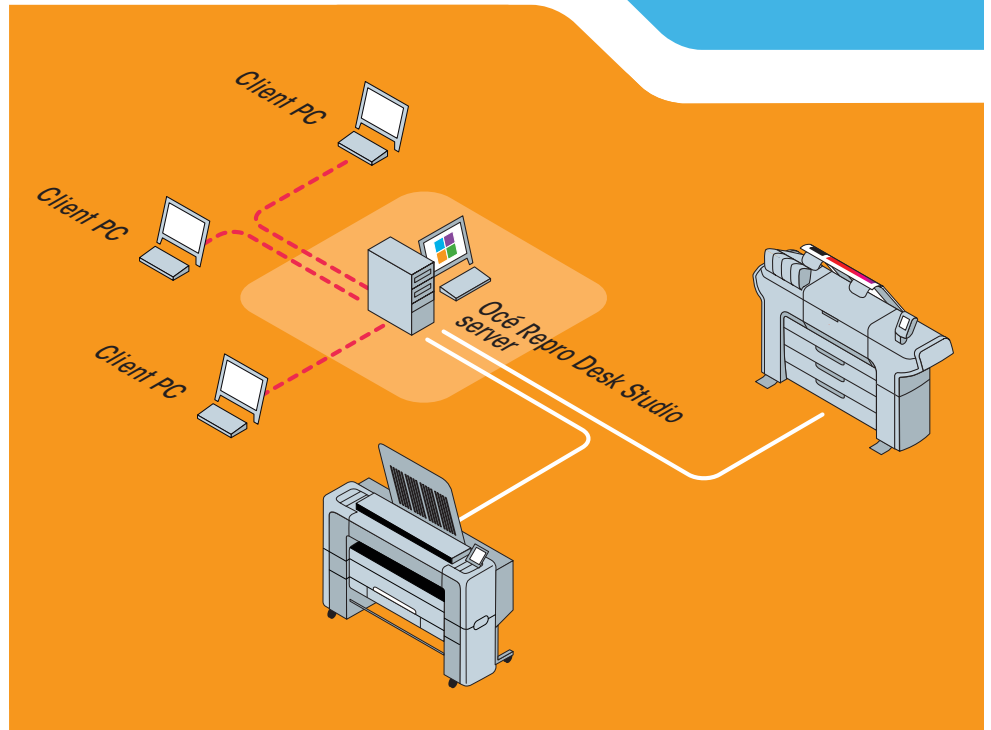
VIC, JOB, LDF

NOTE:

- AutoCAD required for DWG processing within Océ Publisher
- PS/PDF/EPS interpreter plug-in required for processing within Océ Publisher

SUPPORTED OCÉ LARGE FORMAT PRINTERS

- Océ HV Printers
 - Océ PlotWave® 900
 - Océ TDS860 Pro Series
 - Océ TDS800
- Océ MV Printers
 - Océ PlotWave 750
 - Océ TDS750
 - Océ TDS700
 - Océ TDS600
 - Océ ColorWave® 600/650
- Océ LV Printers
 - Océ PlotWave 300/350
 - Océ PlotWave 340/360
 - Océ TDS400/450
 - Océ TDS300/320
 - Océ ColorWave 300



SUPPORTED NON-OCÉ LARGE FORMAT PRINTERS

- Printers supporting HPGL/2 format
- Printers supporting PostScript 3 format
- Printers supporting TIFF Group IV format

SUPPORTED SMALL FORMAT PRINTERS

- Support of any small format device using the Windows Printer Driver of the device
- Job submission only, no feedback on jobs

SUPPORTED SCANNERS

OCÉ LARGE FORMAT SCANNERS

Océ TDS810 scanner, Océ 97 scanner/
Océ 9800 scanner, Océ TDS610 scanner,
Océ TDS400 scanner, Océ TC4 scanner

NON-OCÉ LARGE FORMAT SCANNERS

Not supported

SUPPORTED FOLDERS

- Océ integrated folder for the Océ TDS600/700: full support
- Océ integrated folder for the Océ TDS 800/860 Pro: full support
- Es-Te Folder: limited support, just fold on/off

SERVER REQUIREMENTS

CPU¹

Intel Dual Core 2.40 GHz or equivalent

OPERATING SYSTEM²

- Windows® XP Professional Edition with SP3 (32-bit)³
- Windows Vista® Business Edition with SP2 (32-bit)⁴
- Windows 7 Professional Edition with SP1 (32-bit and 64-bit)
- Windows Server 2003 R2 Standard Edition with SP2 (32-bit)
- Windows Server 2008 Standard Edition with SP2 (32-bit and 64-bit)

DATABASE

SQL Server 2005 Express Edition (Installed automatically)

RAM

4 GB

HARD DISK (OS & APPLICATIONS)

300 GB

NETWORK CARD

100/1000 MB (fast ethernet of greater)

DVD DRIVE

Required

NETWORK HARDWARE

Fast ethernet switch Cat5e or Cat6 cabling

NOTES:

¹ AMD multi-core processors can be substituted

² Operating system versions not specifically listed here are unsupported

³ If Océ Repro Desk Studio software is installed on Windows XP the maximum number of Océ Client Tools software users is nine; larger deployments should use Windows Server 2003 Standard Edition

⁴ If Océ Repro Desk Studio software is installed on Windows Vista the maximum number of Océ Client Tools software users is nine; larger deployments should use Windows Server 2003 Standard Edition

CLIENT REQUIREMENTS

CPU

Meets the minimum requirements of the operating system

OPERATING SYSTEM

- Windows XP Professional Edition with SP3 (32-bit)
- Windows Vista Business Edition with SP2 (32-bit and 64-bit)
- Windows 7 Professional Edition with SP1 (32-bit and 64-bit)

RAM

2 GB

HARD DISK SPACE

80 MB of free space 128 MB of swap space

NETWORK CARD

100/1000 MB

CD ROM

Recommended

INTERNET BROWSER

Microsoft Internet Explorer® 7.0 or higher

AUTOCAD

AutoCAD 2002–2012 (if processing native DWG files)

INTERNET CONNECTION

256 Kbps or greater

LICENSE REQUIREMENTS

OCÉ ACCOUNT LOGIC

For the following functionalities the Océ Account Logic (requires version 2.4 or higher) option on the Océ printers/scanners is required:

- Device feedback on Océ devices
- Retrieving the accounting data from the device for printing/scanning/copying
- Enabling the users to enter the right account information in the system

Océ Account Logic is a licensed option that runs on the Océ Power Logic® controller

PROCESSING PDF FILES

For the processing of PDF files an external optional converter is required

AUTOCAD SUPPORT

- The installed AutoCAD version must be the same as the DWG that is being processed
- AutoCAD software is not required for DWF file processing
- A minimum of 2 GB of memory is recommended



Creating global leadership in printing

Canon and Océ join forces to create the global leader in the printing industry. For our customers this combines Canon and Océ technology with the support of the Océ direct sales and service organizations. Look to the new Canon-Océ combination for:

- Enterprise printing in the office and corporate printroom
- Large format printing of technical documentation, signage and display graphics
- Production printing for marketing service bureaus and graphic arts
- Business services for document process outsourcing

For information and services, visit us at:

www.csa.canon.com

Canon

CANON SOLUTIONS AMERICA

Large Format Solutions

100 Park Boulevard
Itasca, Illinois 60143

1-800-714-4427 | 1-630-250-6550

email: us.info@csa.canon.com

LFS-51156 DS 5/14 CC1/PDF